

Installation Instructions

- 1 Make sure the firearm is unloaded by removing the magazine and clearing the chamber. Visually and physically check to ensure it is empty. Check again.
- 2 Install the battery (1) with the negative (-) side up, positive (+) side against the spring. (One 1/3N Lithium included, or Two 357 Silver Oxide batteries).
- 3 Align the channel in the Right Housing with the trigger guard of the firearm. The top of the laser housing should sit flush to the frame of the firearm. Push the trigger guard into the channel, and push up on the Guard Tab to snap into place (3).
- 4 Assemble the laser housing by angling the rear of the Left Housing 45° to lock it into place. Then close the two halves together (4).
- 5 Squeeze the two halves together with fingers so there is no gap, then insert the self tapping screws into the laser housing. Hand tighten the screws with Phillips head screwdriver until they firmly set (5).

Adjustments, Warning and Cleaning Procedures

Check Alignment (Refer to figure A for location of windage & elevation ports). To check for proper alignment, turn laser on and check laser position relative to iron sights at 5–10 yards. The laser dot should be centered slightly above the top of your iron sights.

Adjust Alignment

If laser needs adjustment, while pointing downrange, turn windage screw clockwise to move laser left, counterclockwise (CCW) to move laser right. Turn elevation screw clockwise to move laser up, CCW to move the laser down into the proper alignment.

A slight shift in alignment may be noticed after firing the first few rounds after installing the CenterFire™. Recheck alignment and readjust if necessary.

* WARNING:

Do not turn alignment screws more than ½ turn in either direction from factory position. This may cause damage to the CenterFire™ and **may void your warranty.**

Cleaning

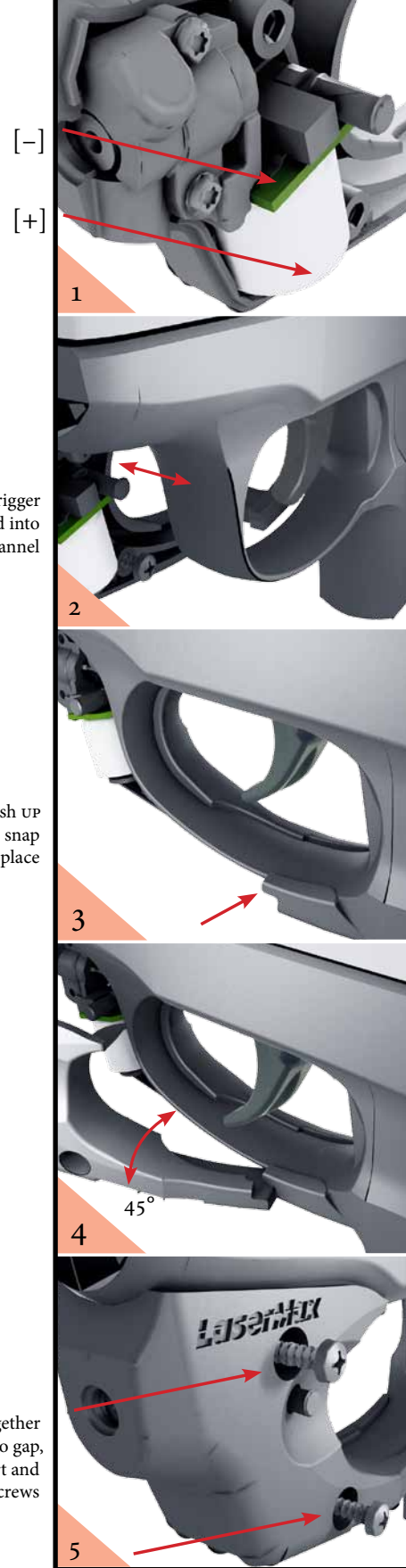
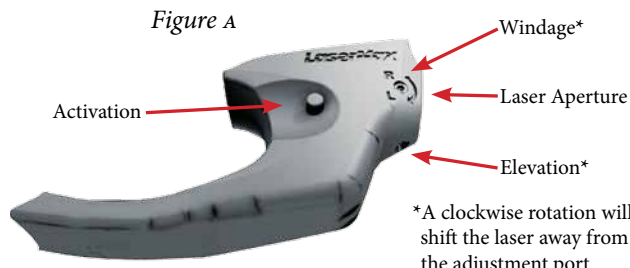
Over time and after numerous rounds of ammunition, your laser lens could become clouded with gun shot residue. In order to remove this residue:

- Keep firearm pointed in a safe direction. Be sure to unload your firearm by removing the magazine and clear any rounds in the chamber keeping hands from passing in front of the muzzle. Confirm laser is off.
- Take a standard cotton swab and dampen end with isopropyl alcohol.
- Apply dampened swab to the laser lens, and rotate in a small circular pattern removing any residue. Be sure to clean around the edges of the lens

For best results, it's recommended that the laser lens is cleaned at the end of each day you shoot – similar to routine firearm cleaning.

Operating Instructions

Activate the laser by pushing in on the activation switch from either side (center position is OFF).



Spare Parts List:

LMS-AT50	ADJUSTMENT TOOL
LMS-2X13N	1/3N BATTERIES
CF-MS	MOUNTING SCREWS

LASER RADIATION
AVOID DIRECT EYE EXPOSURE
CLASS 3R LASER PRODUCT
<5mW
Wavelength: 650nm



Complies with 21CFR1040 per
Laser Notice 50 (2001)

DANGER

Laser radiation is emitted from the front aperture of the laser when the switch is activated.

WARNING

Avoid direct eye exposure to beam.

REMINDER

Aiming a laser beam at moving vehicles including boats, aircraft, trains, and construction equipment may be illegal. Check current applicable laws and follow them accordingly.

CF-LCP/CF-LC9

Red Laser

CLASS 3R VISIBLE LASER

Output Power: <5mW

Wavelength: 650nm

LASERMAX, INC

3495 Winton Place

Rochester, NY 14623 USA

LaserMax
CENTERFIRE™
Laser Series
for Ruger LCP® and LC9™
Patent Pending



Always observe basic firearms safety rules.
Always point the firearm and laser in a safe direction.

- LaserMax Centerfire (2 Pieces)
- Battery
- Adjustment Tool
- Self Taping Screws (2 Pieces)

What's in the Box



Limited Warranty

Registration of your product is required in order to receive warranty service. Log on to www.lasermax.com to fill out the registration form.

LaserMax, Inc. laser products, except expendable parts, are warranted to be free from defects in material and workmanship for a period of one year from the date of purchase, submitted through warranty registration at www.lasermax.com. Expendable parts shall be defined as batteries, springs, and replaceable plastic parts. Expendable parts of some models have definite life expectancies. They should be replaced as recommended to protect the laser and preserve your warranty. This warranty shall benefit, and may be enforced only by the initial purchaser of the laser system and is not transferable. Warranty is limited solely to repairing or replacing the part(s), at the discretion of LaserMax, Inc.; which proves to be defective during the warranty period. Parts and equipment replaced under warranty will not be returned. Parts and equipment repaired under warranty will be covered for the remaining portion of the original warranty period. This warranty does not apply to equipment or parts which upon inspection by LaserMax, Inc. are determined by LaserMax, Inc. to have become defective or unworkable due to abuse, mishandling, misuse, alteration, negligence, improper installation or maintenance, damage resulting from use of springs not supplied with laser, damage resulting from repair or attempted repair by anyone other than LaserMax, Inc. or a repair facility authorized by LaserMax, Inc., or other causes beyond the control of LaserMax, Inc.

All returns must have factory labeling present and legible. LaserMax reserves the right to substitute equivalent product replacement at its discretion. All returns require a return authorization number available from our Warranty Department at 1-800-LASER-03. The hours of operation are from 9am to 5pm EST, Monday through Friday.

LASERMAX, INC. DISCLAIMS LIABILITY FOR INCIDENTAL AND CONSEQUENTIAL DAMAGES FOR BREACH OF ANY EXPRESS OR IMPLIED WARRANTY. ANY IMPLIED WARRANTY OF MERCHANTABILITY OR FITNESS FOR A PARTICULAR PURPOSE, WITH RESPECT TO THE LASERMAX, INC. LASER PRODUCT IS FOR A PERIOD OF ONE YEAR FROM DATE OF PURCHASE. THIS WARRANTY GIVES YOU SPECIFIC LEGAL RIGHTS, AND YOU MAY ALSO HAVE OTHER RIGHTS WHICH VARY FROM STATE TO STATE.

Questions or Comments?

Have Questions? Contact us by phone, e-mail, or on the web
Phone: 800-527-3703, or 585-272-5420.
Fax: 585-272-5427
E-Mail: customerservice@lasermax.com
For warranty registration visit www.lasermax.com



Unfold for General Information. See Reverse Side for Installation Instructions
The **FDA REQUIRES** the label supplied with your laser be affixed to the outside of the gun near the laser aperture.