

## What's In the Box

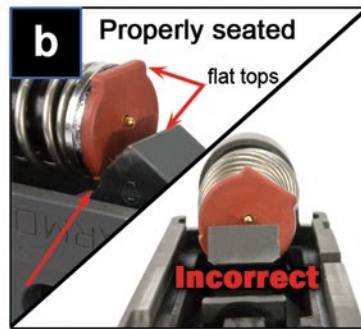
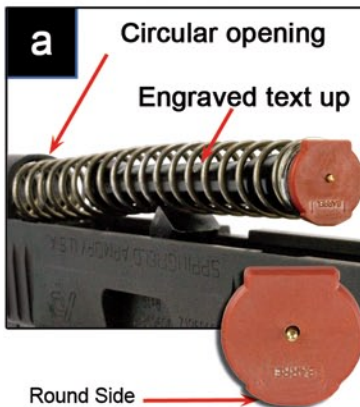


### Parts:

- (A) GUIDE ROD LASER (LMS-XDMS)
- (B) RECOIL SPRING (LMS-XDMSRS)
- (C) BATTERY CAP (LMS-XDMBC)
- (D) BATTERY: 393 (3)(LMS-3X393)
- (E) TAKEDOWN LEVER/ACTIVATION SWITCH (LMS-XDMSW)

## Installing Guide Rod Laser

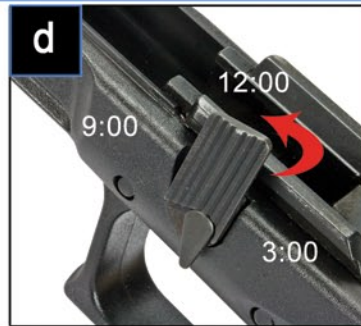
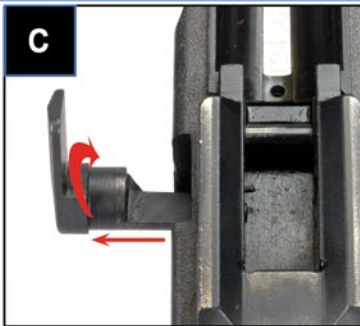
### Figures



Note correct position of battery cap - flat portion of cap is parallel with flat top of lug, and the cap is centered with lug.

- 1 Remove the magazine from your firearm and clear the action. Make sure your gun is unloaded.
- 2 Check again.
- 3 Field strip your firearm according to the Springfield XD<sup>M</sup> owner's manual.
- 4 Remove the factory guide rod & spring - store for future use.
- 5 Insert recoil spring provided into circular opening in the front of the slide. Next, insert the LaserMax Guide Rod Laser into the opposite end of the spring with engraved text facing up away from barrel (See figure a).
- 6 Applying forward pressure to compress spring, seat round side of battery cap marked with "↑barrel↑" (arrows point toward barrel) in the crescent notch of barrel lug. The flat cap top should be centered and parallel with flat top of the lug. (See figure b).

## Installing Takedown Lever/Activation Switch



- 1 Remove the factory takedown lever from frame by twisting it counter-clockwise while pulling the lever away from the frame until switch pulls out (See figure c). Store with factory guide rod for future use.
- 2 Insert the LaserMax lever/switch (Part E) with switch "flag" pointing at the 3:00 position. Firmly push in towards the frame while twisting counter-clockwise to 12:00 (See figure d), then to 9:00, then back to 12:00 and push in on switch to lock it in and make it flush with the frame. (See figure d).
- 3 Reassemble your firearm as you normally would (consult your XD<sup>M</sup> manual).

## Operation



The red dot indicates the laser is on.

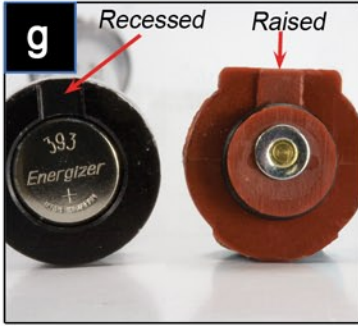


The switch in the off position

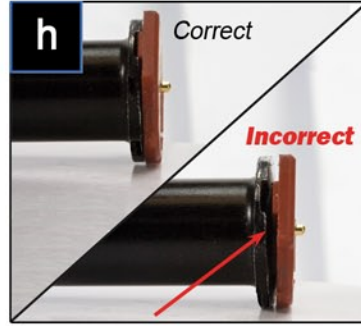
- 1 Point the firearm in a safe direction.
- 2 Rotate the teardrop shaped switch 90° clockwise on the takedown lever located on the left side of the firearm to turn laser on (See figure e). Notice: The red dot on the switch indicates the laser is on.  
*Note: the laser sight should be projecting a pulsating red beam that closely matches the Point of Aim (POA) of the factory open sights.*
- 3 Rotate the teardrop shaped switch 90° counterclockwise, back to the original position to turn laser off (See figure f).

The laser sight is factory aligned. No further alignment is needed. Your POA and Point of Impact (POI) will be within 3" at 20 yards.

## Changing the Batteries



The negative side of the battery goes into the tube first. The correct orientation of the batteries shown above.



Battery cap must be installed correctly for the O-ring to seal and hold the cap in place.

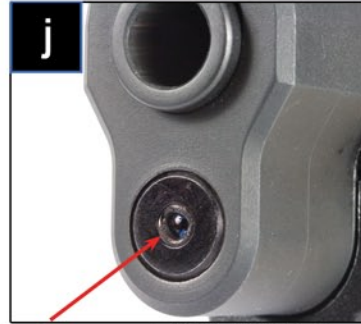
- 1 Field strip the firearm & remove the Guide Rod Laser.
- 2 Gently pop the cap off the laser tube to expose the batteries.
- 3 Replace batteries with a new set. Make sure the flat inscribed end of the batteries is facing toward you (See figure g).
- 4 With the recessed notch on the laser tube at the 12:00 position, place the battery cap raised notch at the 9:00 position, insert the opposite end of the cap into the battery compartment first. Then push in while twisting the cap clockwise and you will feel the cap snap into place and seal.
- 5 The cap will lay flush to the tube (See figure h). If a gap exists, the O-ring did not seat properly - remove cap and perform step 4 again.

This laser sight uses three 393 batteries (LMS-3X393) - LaserMax shrink wraps them for easy use. Operating temperature range for batteries is from 15°F to 120°F

## Cleaning & Maintenance



LaserMax recommends replacing recoil springs on model LMS-XDMS after 5,000 rounds. If you need to replace the recoil spring, contact our warranty department at 800.527.3703 M-F 9am-5pm EST.



Over time and after numerous rounds of ammunition, your laser lens could become clouded with gun shot residue. In order to remove this residue:

- 1 Keep firearm pointed in a safe direction. Be sure to unload your firearm and clear any rounds in the chamber keeping hands from passing in front of muzzle. Confirm laser is off.
- 2 Take a standard cotton swab and dampen end with isopropyl alcohol.
- 3 Apply dampened swab to the laser lens, and rotate in a small circular pattern removing any residue. Be sure to clean around the edges of the lens (See figure j).

Note: For best results, it's recommended that the laser lens is cleaned at the end of each day you shoot - similar to routine firearm cleaning.

## Limited Warranty

**IMPORTANT: LaserMax does not warranty the alignment or function of the Guide Rod Laser for ported, compensated, or altered from stock factory configuration firearms.**

LaserMax, Inc. laser products, except expendable parts, are warranted to be free from defects in material and workmanship for a period of three years from the date of purchase, as shown on the warranty card returned to LaserMax. Expendable parts shall be defined as batteries, springs, and replaceable plastic parts. Expendable parts of some models have definite life expectancies. They should be replaced as recommended to protect the laser and preserve your warranty. This warranty shall benefit, and may be enforced only by the initial purchaser of the laser system and is not transferable. Warranty is limited solely to repairing or replacing the part(s), at the discretion of LaserMax, Inc.; which proves to be defective during the warranty period. Parts and equipment replaced under warranty will not be returned. Parts and equipment repaired under warranty will be covered for the remaining portion of the original warranty period. This warranty does not apply to equipment or parts which upon inspection by LaserMax, Inc. are determined by LaserMax, Inc. to have become defective or unworkable due to abuse, mishandling, misuse, alteration, negligence, improper installation or maintenance, damage resulting from use of springs not supplied with laser, damage resulting from repair or attempted repair by anyone other than LaserMax, Inc. or a repair facility authorized by LaserMax, Inc., or other causes beyond the control of LaserMax, Inc. All returns must have factory labeling present and legible. All returns require a return authorization number available from our Warranty Department at 1-800-LASER-03. The hours of operation are from 9 a.m. to 5 p.m. EST, Monday through Friday.

**LASERMAX, INC. DISCLAIMS LIABILITY FOR INCIDENTAL AND CONSEQUENTIAL DAMAGES FOR BREACH OF ANY EXPRESS OR IMPLIED WARRANTY. ANY IMPLIED WARRANTY OF MERCHANTABILITY OR FITNESS FOR A PARTICULAR PURPOSE, WITH RESPECT TO THE LASERMAX, INC. LASER PRODUCT IS FOR A PERIOD OF THREE (3) YEARS FROM DATE OF PURCHASE. THIS WARRANTY GIVES YOU SPECIFIC LEGAL RIGHTS, AND YOU MAY ALSO HAVE OTHER RIGHTS WHICH VARY FROM STATE TO STATE.**

## SPARE PARTS LIST:

**LMS-XDMBC:** Battery Cap  
**LMS-3x393:** Batteries: 393 (3)

**LMS-XDMSRS:** Recoil Spring  
**LMS-XDMSW:** Take Down Lever/Switch

LMS-XDMS  
 Red/Orange Laser  
**CLASS 3R VISIBLE LASER**  
 Output Power: <5mw  
 Wavelength: 635nm



**DANGER:**  
 Laser radiation is emitted from the front aperture of the laser when the switch is activated

**WARNING:**  
 Avoid direct exposure to beam

**Reminder:** Aiming a laser beam at moving vehicles including boats, aircraft, trains, and construction equipment may be illegal. Check current applicable laws and follow them accordingly.

MANUFACTURED BY  
**LASERMAX, INC.**  
 3495 WINTON PLACE  
 ROCHESTER, NY 14623 USA