

## BATTERIES

Replacements are available from your dealer or direct from us. DO NOT remove the shrink wrap from the LaserMax battery packs.

For longer battery life, avoid getting finger oils on the battery contact surfaces. Operating temperature range for batteries is from 14 degrees F to 120 degrees F. LaserMax recommends keeping a fresh set of batteries for carry and using older batteries for practice. **Do not use loose batteries.**

## TROUBLESHOOTING

1. Review installation instructions and install a second time to eliminate human error. Fully cycle the slide several times, allowing the slide to go forward under full pressure of the recoil spring to ensure that the *guide rod laser assembly* is properly seated in the frame.
2. Check batteries. Is the + side up? Are they clean and free from oil?
3. Check the battery cap. Is there a gold contact pin?
4. Is the slide *disassembly lever/activation switch* installed correctly? Excessive lubricant can insulate the gun parts and break the circuit.
5. If there is still a problem, call the LaserMax Gunsight Technical Support and Warranty Department at 1-800-527-3703. Technical assistance is available from 9am to 4:30pm EST Monday thru Friday. You can also find video assistance by visiting [www.youtube.com/LaserMaxInc](http://www.youtube.com/LaserMaxInc).
6. If the sight has to be returned for repair, call our Warranty Department for a return authorization BEFORE sending the sight. LaserMax will not be responsible for items returned without authorization. Do not return any parts or accessories not requested by the Warranty Department.

## REPLACEMENT PARTS

LMS-300	warning label
LMS-3x393	battery pack
06354-3-1	battery cap assembly
06353-3-1	disassembly lever/activation switch
06320-0-1	shock buff
06319-0-1	captive spring bushing
06318-0-1	recoil spring



IF YOU EXPERIENCE AN ISSUE  
WITH YOUR  
GUIDE ROD LASER  
PLEASE DO NOT RETURN IT  
TO THE STORE.

Contact LaserMax Customer Service:  
☎ 800-527-3703



Red Laser  
CLASS 3R VISIBLE LASER  
Output Power: <5mW  
Wavelength: 600–700nm

### REMINDER

Aiming a laser beam at moving vehicles including boats, aircraft, trains, and construction equipment may be illegal. Check current applicable laws and follow them accordingly.

### DANGER

Laser radiation is emitted from the front aperture of the laser when the switch is activated.

### WARNING

Avoid direct eye exposure to beam. Do not point laser at anything you do not wish to destroy.

### NOTICE

The FDA requires the label supplied with your laser be affixed to the outside of the gun near the laser aperture.

## LASERMAX LIMITED WARRANTY

LaserMax is pleased to offer a five (5) year limited warranty for this product. To take advantage of this coverage, the product must be registered no later than 90 days after purchase.

This product may be registered by completing a Registration Form which may be found at [www.lasermax.com/support](http://www.lasermax.com/support) or by contacting the LaserMax Customer Service Department at 1-800-527-3703. The LaserMax Limited Warranty extends specific legal rights to the registrant. Other rights, which vary from state to state, may also apply. This product is warranted to be free from defects in material and workmanship at the time of purchase. This limited warranty does not cover expendable parts (ex: batteries), that have definite and predictable life expectancies. This warranty does not cover products that LaserMax determines have been exposed to abnormal use in any way. Examples of abnormal use include, but are not limited to, damage from mishandling, misuse or abuse, damage from exposure to abnormal conditions, damage from improper care and maintenance, or installation of the product in or on any firearm model the product is not specifically advertised to be used with. Warranty coverage begins on the date of purchase and ends five (5) years after date of purchase. This limited warranty extends only to the original registrant and is non-transferable. To file a warranty claim, a warranty repair request must be submitted, and a Return Merchandise Authorization (RMA) number issued by the LaserMax Warranty Department, within five (5) years from date of purchase. Following submission of a warranty claim, LaserMax reserves the right to inspect the product to determine its eligibility for warranty coverage. If deemed eligible, LaserMax will repair or replace the part(s)/product that LaserMax, at its sole discretion, determines to be defective during the warranty period. If deemed ineligible, LaserMax will return the part(s)/product with an explanation of why coverage is not available. LaserMax reserves the right to replace defective part(s)/product with an equivalent substitute product at its sole discretion. Any and all implied warranties, including the implied warranties of merchantability, fitness for a particular purpose, and non-infringement, also begin on the date of purchase and end five (5) years after date of purchase. This limitation does not apply to residents of states that disallow limitations on the length of implied warranties. The preceding process is both the exclusive remedy and LaserMax's exclusive liability for any warranty claim. LASERMAX WILL NOT, UNDER ANY CIRCUMSTANCES, BE LIABLE FOR ANY INCIDENTAL, INDIRECT, CONSEQUENTIAL, PUNITIVE OR EXEMPLARY DAMAGES (EVEN IF LASERMAX HAS BEEN NOTIFIED OF THE POSSIBILITY OF SUCH DAMAGES) RESULTING FROM OR RELATED TO A PRODUCT, INCLUDING, WITHOUT LIMITATION, ANY LOSS OF PROFIT, OPPORTUNITY, OR DAMAGES IN EXCESS OF THE PURCHASE PRICE OF THE WARRANTED PRODUCT. THIS LIMITATION DOES NOT APPLY TO RESIDENTS OF STATES THAT DISALLOW LIMITATIONS ON INCIDENTAL OR CONSEQUENTIAL DAMAGES.



LaserMax Products  
7629 Routes 5 & 20, Bloomfield, NY 14469  
☎ 800-527-3703 • [www.lasermax.com](http://www.lasermax.com)

For patent information, please visit:  
[www.lasermax.com/patents](http://www.lasermax.com/patents)  
LMS-HKVP9-515

Copyright © 2024 Crosman Corporation. All rights reserved. LaserMax and the LaserMax logo are registered trademarks of Crosman Corporation. All other trademarks are property of their respective owners.

LaserMax

GUIDE ROD LASER™

AS RUGGED AS THE GUN

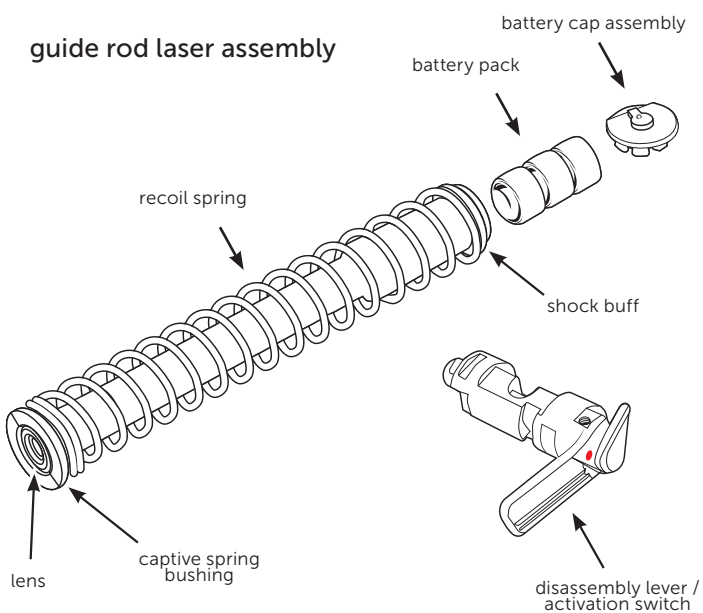


Operator's Manual

H&K VP9 Pistols

LMS-HKVP9

# PARTS IDENTIFICATION



laser safety label



See this sight installed at [www.youtube.com/LaserMaxInc](http://www.youtube.com/LaserMaxInc).

**IMPORTANT:** Follow all precautions as outlined by the firearms manufacturer. Keep this and all firearm related products locked and secured from children or other unauthorized users.

Before handling any firearm with or without a laser, read and understand the entire contents of your firearm and laser manual, especially the safety precautions and procedures for safe firearms handling.

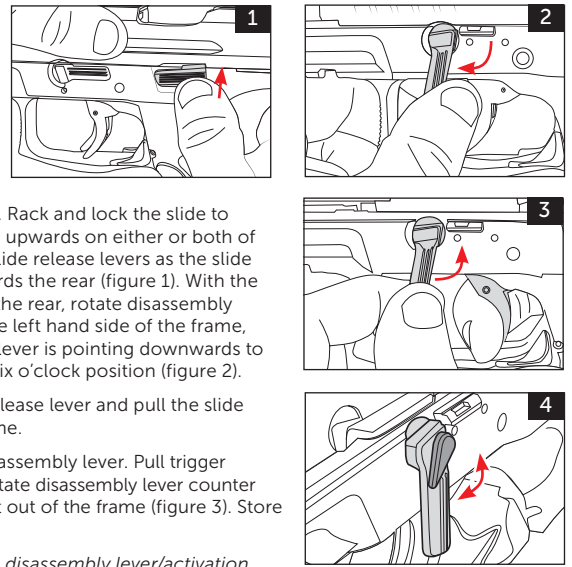
Always make sure the weapon is unloaded and safe before attempting to install or uninstall your laser or making adjustments or changing laser batteries. Never put your hand in front of the muzzle of a firearm. Always keep your finger away from the trigger until you are ready to fire.

## INSTALLATION

**WARNING:** H&K and LaserMax guide rod assemblies contain springs under pressure. Safety glasses are recommended during all steps of assembly and disassembly.

This state-of-the-art laser sighting system is designed for use with specific H&K pistol platforms. Do not attempt installation on any other firearm platforms.

1. Remove pistol slide. Rack and lock the slide to the rear by pressing upwards on either or both of the ambidextrous slide release levers as the slide is pulled back towards the rear (figure 1). With the slide still locked to the rear, rotate disassembly lever, located on the left hand side of the frame, clockwise until the lever is pointing downwards to approximately the six o'clock position (figure 2).
2. Depress the slide release lever and pull the slide forward off the frame.
3. Remove factory disassembly lever. Pull trigger and hold to rear. Rotate disassembly lever counter clockwise and pull it out of the frame (figure 3). Store for future use.
4. Install the LaserMax *disassembly lever/activation*

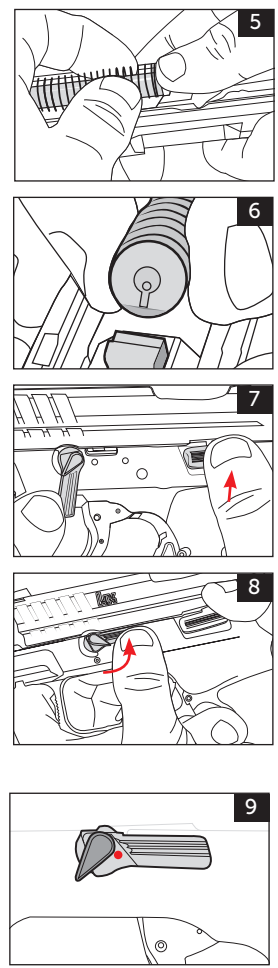


*switch*. Pull trigger to release spring tension and push *disassembly lever/activation switch* into hole in frame with lever at six o'clock position while rotating back and forth until it locks into place (Figure 4).

5. Removal of the factory guide rod assembly. Turn the slide upside down and carefully push the guide rod assembly forward and out to either the left or right hand side, separating the guide rod assembly from the barrel and slide (figure 5). Store the factory guide rod assembly for future use.
6. Installing your LaserMax Guide Rod Laser. Firmly grasp the *guide rod laser assembly* by the *battery cap assembly* end and insert the assembly into the slide while pushing the front of the *guide rod laser assembly* through the guide rod hole and pushing the *battery cap assembly* end down with the rectangular tab towards the bottom of the barrel lug, and carefully centered (figure 6).
7. With disassembly lever still in six o'clock position, mount the slide to the frame. Pull back slide while pressing up on slide release lever (figure 7) until it reaches the rear of its travel and the slide is locked open. Pivot disassembly lever counter clockwise so the lever lies horizontal to the bottom of the slide (figure 8). If resistance is felt during assembly, do not force. Remove the slide, ensure that the *battery cap assembly* rectangular tab is towards the bottom of the barrel lug, then attempt assembly again.
8. Fully cycle the slide several times, allowing the slide to go forward under full pressure of the recoil spring to ensure that the *guide rod laser assembly* is properly seated in the frame.

## OPERATION

1. Rotate the teardrop shaped switch approximately 90° clockwise on the *disassembly lever/activation switch* located on the left side of the firearm to turn laser on.



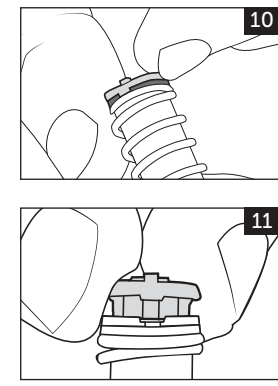
Note: The red dot on the switch indicates the laser is on (figure 9). Return teardrop shaped switch to start position to turn the laser off.

**Note:** After extremely high volumes of continued fire, the laser may start to dim. When the laser is allowed to cool, it will return to normal brightness.

## BATTERY REPLACEMENT

**TIP:** During periods of non-use, test the LaserMax laser periodically to ensure adequate battery levels.

1. Installation or replacement of *battery pack* is accomplished by removing *battery cap assembly* from the rear of the *guide rod laser assembly*. Use fingernail to pull *battery cap* off the laser tube to expose *battery pack* (figure 10).
2. Replace with new *battery pack* oriented with positive (+) facing out.
3. Replace *battery cap assembly* by aligning tab on *battery cap* with notch on the laser tube and press into place (figure 11). The *battery cap* will snap into place and seat.



## CLEANING & MAINTENANCE

After repeated fire, the *lens* may become clouded with gunpowder residue. For best results, it is recommended that this area be cleaned, along with the firearm, after each use. To clean the *lens*, follow these steps.

1. Confirm firearm is unloaded.
2. Keep firearm pointed in a safe direction.
3. Confirm laser is off.
4. Dampen the end of a cotton swab with isopropyl alcohol.
5. Apply dampened swab to *lens* and polish in a small circular pattern. Be sure to clean around edges of *lens*.
6. Wipe with dry swab or cloth.

The H&K firearm should be lubricated exactly as directed in the Owner's Manual. Excess lubricant can interfere with the proper function of both the firearm and the Guide Rod Laser. Similarly, failure to properly clean and lubricate the firearm as directed can interfere with the proper function of both the firearm and the Guide Rod Laser. LaserMax components should never be submerged or flushed with cleaning solvents. Failure to adhere to these guidelines may cause damage and void the factory warranty.